

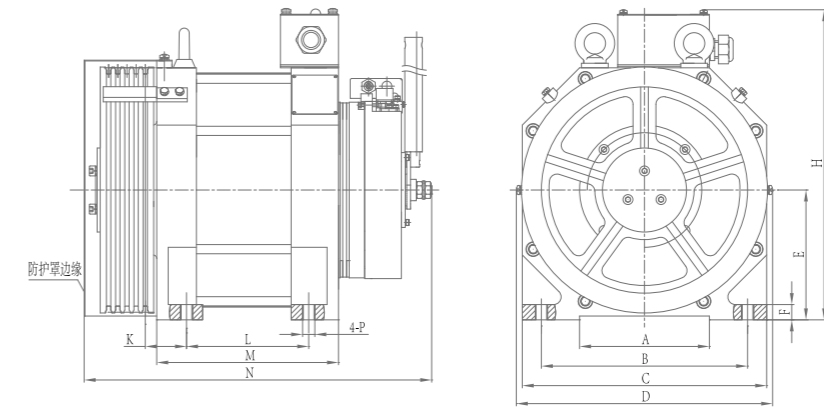
WYT-L

永磁同步曳引机

PM Traction Machine

WYT-L系列产品是我司2015年研发的新一代内转子结构的永磁同步曳引机，尤其适用于小机房或无机房。

WYT-L series products is the new generation inner rotor structure PM gearless traction machine developed by Bluelight in 2015. It is suitable for mini machine room or machine roomless elevator application.



外观尺寸图 | Outline drawing

主机技术参数 (Traction Machine Parameter)

额定电压 (Voltage) : AC380V

悬挂比 (Roping) : 2: 1

钢丝绳绕法 (Wrap) : 单绕 (Single)

额定载重量 (Capacity) : 320kg~1050kg

轿厢速度 (Speed) : 0.5m/s~2.0m/s

防护等级 (Protection Grade) : IP41

绝缘等级 (Ins. Class) : F

曳引机极数(Traction machine pole): 20

启动频次(次/小时, Stars per hour): 240

工作制(Rating): S5-40%

推荐提升高度(Elevator Height): ≤80m

制动器技术参数 (Brake Parameter)

型号 (Model) : BLS

绝缘等级 (Ins.Class) : F

额定电压 (Voltage) : DC110V

额定电流 (Current) : 1.46Ax2

特点 (Features)

- 定子无机壳，散热效果好，效率高；
- 高转矩密度设计，材料利用率高，体积小重量轻；
- 电磁结构优化，低速运行平稳，过载能力强；
- 采用轴刹制动器，结构紧凑，制动噪音低，响应速度快。
- No frame on motor stator, further improves heat dissipation.
- High efficiency and high torque density design with high material utilization, small size and light weight.
- The inner rotor structure improves electromagnetic structure, result smooth low speed running and high overload capacity.
- Use shaft brake, with the advantage of compact structure, low braking noise and fast response time.

WYT-L内转子系列 WYT-L Inner Rotor Series

型号 Model	规格 Type	载重 Capacity (kg)	轿厢速度 Speed (m/s)	曳引轮直径 Sheave (mm)	槽数 Num	绳径 (mm)	槽间距 Pitch (mm)	额定电流 Current (A)	额定转速 Motor Speed (rpm)	额定频率 Frequency (Hz)	额定功率 Power (kW)	额定转矩 Torque (Nm)	最大轴负荷 Shaft Load (kg)	主机重量 Weight (kg)	安装尺寸 Dimension(mm)												
															A	B	C	D	E	F	H	K	L	M	N	P	
WYT-L	B0.5AS	450	0.5	φ240	7	φ6	9	3.9	79	13	1.5	180	2000	≈150	170	270	320	356	170	20	406	54	160	238	455	M16	
	B1.0AS		1.0					7.6	159	26.5	3																
	B0.5A	0.5	φ320	4	φ8	12	3.9	59	9.8	1.5	240																
	B1.0A	1.0					7.6	119	19.8	3																	
	B0.5BS	0.5	φ240	8	φ6	9	5.2	79	13	2	240																
	B1.0BS	1.0					10.4	159	26.5	4																	
	B1.75BS	1.75	φ320	5	φ8	12	16.4	278	46.3	7	340																
	B0.5B	0.5					5.7	59	9.8	2.1																	
	B1.0B	1.0	10.2	119	19.8	4.2	340																				
	B1.75B	1.75	17.3	208	34.7	7.4																					
	0.5CS	0.5	φ240	10	φ6	9	6.3	79	13	2.7	320																
	1.0CS	1.0					12.7	159	26.5	5.3																	
	1.5CS	1.5	φ320	6	φ8	12	18.8	238	40	8	430																
	1.6CS	1.6					20.2	254	42.3	8.5																	
	1.75CS	1.75	φ240	10	φ6	9	22.2	278	46.3	9.3	400																
	2.0CS	2.0					24.8	318	53	10.7																	
	0.5C	0.5	φ320	7	φ8	12	6.3	59	9.8	2.7	530																
	1.0C	1.0					12.7	119	19.8	5.4																	
	1.5C	1.5	φ240	10	φ6	9	18.8	178	29.7	8	430																
	1.6C	1.6					20.2	190	31.7	8.6																	
	1.75C	1.75	φ320	6	φ8	12	22.2	208	34.7	9.4	400																
	2.0C	2.0					24.8	239	39.8	10.8																	
	0.5DS	0.5	φ240	10	φ6	9	7.5	79	13	3.3	400																
	1.0DS	1.0					15.1	159	26.5	6.7																	
1.5DS	1.5	φ320	7	φ8	12	22.8	238	40	10	530																	
1.6DS	1.6					24.1	254	42.3	10.6																		
1.75DS	1.75	φ240	10	φ6	9	26.5	278	46.3	11.6	400																	
2.0DS	2.0					29	318	53	13.3																		
0.5D	0.5	φ320	7	φ8	12	7.5	59	9.8	3.3	530																	
1.0D	1.0					15.1	119	19.8	6.6																		
1.5D	1.5	φ240	10	φ6	9	22.8	178	29.7	9.9	400																	
1.6D	1.6					24.1	190	31.7	10.5																		
1.75D	1.75	φ320	6	φ8	12	26.5	208	34.7	11.5	530																	
2.0D	2.0					29	239	39.8	13.3																		